

Spedal®

User Manual

Spedal WebcamExpert

Welcome to use the Spedal webcam application software. If any problem occurs during use, please contact us via the after-sales mailbox service@spedaltech.com or leave a message via the official website: www.spedal.cc

Contents

Software installation and use	01
1.1 Software download and installation	02
1.2 Software activation and authorization	05
Introduction to the software functions	07
2.1 Scene and camera functions	07
2.2 Beauty and filter functions	09
2.3 Basic settings and cropping function	10
2.4 Mixer function	11
2.5 Other functions	12
Software settings and help	14
3.1 Save and load configuration files	14
3.2 Video adoption settings	15
3.3 Software update settings	17
3.4 Language setting and help function setting	18

Software installation and use

Spedal camera software is a video stream adjustment software specially developed and designed for webcams. Customers can use the software to modify the color, size and more of the image in the process of using the camera, such as online courses, video conferences, and live streaming, so as to achieve better image presentation quality to meet the needs of different scenes.

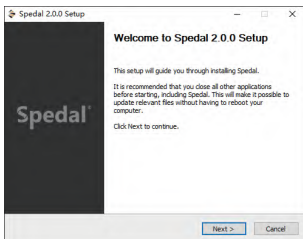
Spedal camera software has been developed for Windows and Mac versions. The software is compatible with other brands of cameras on the market, such as Logitech, Nexigo, Anker, Aukey, eMeet, etc. In order to achieve the optimal synergy of software and hardware, we recommend that you use Spedal's camera. In addition, the software is compatible with common video call software such as Skype, Microsoft Teams, and Zoom, and the screen adjusted by the Spedal software can be called by other software as a virtual camera.

You are welcome to follow the guide below to install and use this software!

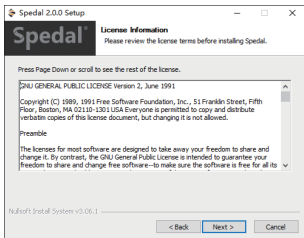
If you encounter any problems while using the software or hardware of the Spedal camera, please feel free to email us! Email address:service@spedaltech.com

1.1 Software download and installation

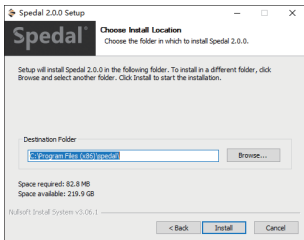
1. Visit the official website www.spedal.cc, find and download the webcam software installation package through the path "Homepage"->"Support"->"Download"->"Software & Firmware";
2. Run the Spedal software installation program, the installation guide will prompt the software related content and installation directory, and click Next after confirming that it is correct;

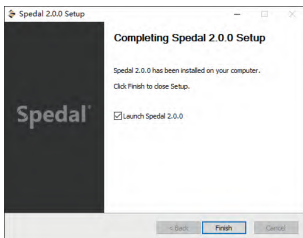
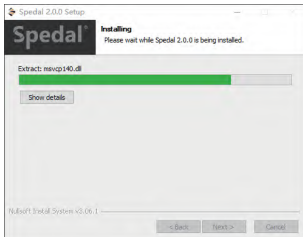


3. During the installation process, you can always choose Back to go back to the previous step to read related content or modify the installation location, or you can choose Cancel to cancel the installation;



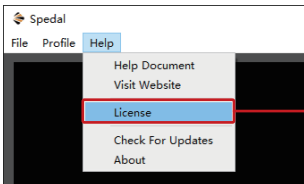
4. Click Install at the end to complete the entire installation process. You can delete the installation package after the program is installed. The Spedal application will not retain any residual files on your computer.



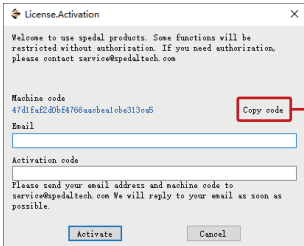


1.2 Software activation and authorization

1. When the software is not authorized, some functions are not activated. Users need to send an email to Spedal's official service mailbox to obtain the activation code. Path to obtain authorization on the software interface: "Help"->"License"->"Copy Code". Please send your email address, machine code and purchase order number to service@spedaltech.com



Click "License" under "Help"



Click "Copy Machine Code" and send it to service@spedaltech.com to get an activation code

2. Our staff will send the authorization code to your mailbox within 48 hours. Please copy the received authorization code to the Spedal application software (path: "Help"->"License") to activate all the functions of the software.

License.Activation

Welcome to use spedal products. Some functions will be restricted without authorization. If you need authorization, please contact service@spedaltech.com

Machine code
47d1fa2d0b54766aa0bea0be3130a5 Copy code

Email

Activation code

Please send your email address and machine code to service@spedaltech.com We will reply to your email as soon as possible.

Enter your email address here

Enter the activation code you receive here

Click "Activate" to activate the software

Introduction to the software functions

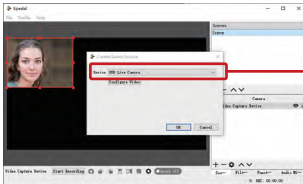
2.1 Scene and camera functions

Spedal software supports single and multiple video streams. Users can add multiple scenes or devices under the scene and video equipment acquisition module. This setting is suitable for users who need multiple angles or scenes.

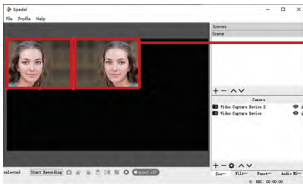
1. Scene module: The software defaults to one scene. Users can add multiple scenes as needed and freely switch the scenes they choose during live streaming or video meetings. The unselected scene will not be displayed. Please select "+" to add a scene, and select "-" to delete a scene.



2. Video capture device module: Users can add multiple video capture devices in the same scene, or select multiple devices for different scenes. In the Camera column, please select "+" to add a device, and select "-" to delete a device.



Select device

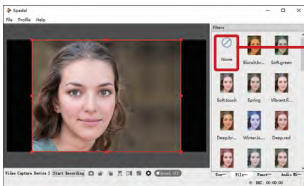


One or more devices can be selected in the same scene

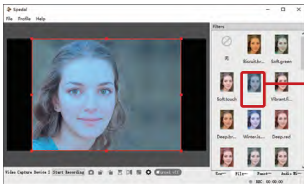
2.2 Beauty and Filter functions

The beauty function can effectively improve the performance of the face in front of the camera(About to release in August 2021).

The filter can adjust the overall presentation style of the picture.



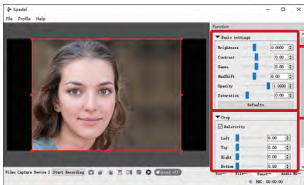
No filter effect



Filter effect

2.3 Basic settings and Cropping function

You can adjust the camera's brightness, contrast, hue, transparency, saturation, etc. in the basic settings.

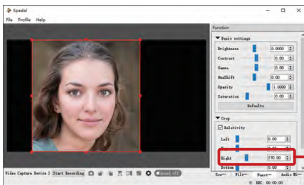


"Basic Settings" module
You can adjust the camera brightness, hue, aturation, etc. according to your needs

"Cropping function" Module
You can crop the video image according to your needs, you can use the slide bar or enter a peficic value on the right side

It is recommended that you make a second adjustment to the picture in the basic settings after selecting the appropriate filter.

The cropping function is divided into two methods: relative cropping and absolute cropping. You can modify the size and position of the screen, so that your screen can show the best results.

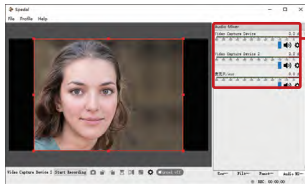


Video cropping effect
Compare with the picture above

The modified screen can be used by other software as a virtual camera. You can select Spedal Webcam in the input options of other software to call the modified screen. If you want to restore the original state, just click the default value button to restore to the original state.

2.4 Mixer function

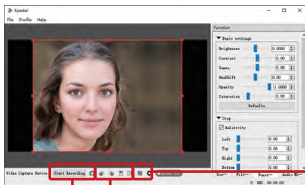
Through the mixer function, you can adjust the audio volume, channel, balance, sync offset, monitoring, track, etc.



"Mixer" module
Adjust the audio according
to your needs

2.5 Other functions

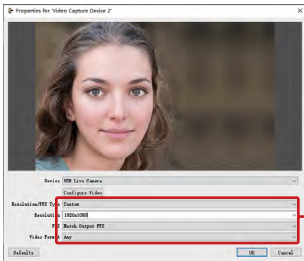
In the menu bar at the bottom of the software, there are buttons for recording, taking pictures, rotating left and right, flipping up and down, flipping left and right, adapting to screen size, attributes, and enabling/disabling. These buttons are only available when the screen is selected and a red prompt line appears at the edge of the screen. You can click the Properties button to set the device and preset resolution.



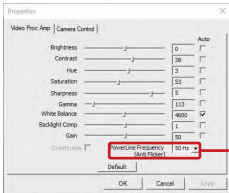
Fit screen size and Attributes

Rotate left and right, flip up and down, flip left and right

Start recording and take photos



Customizable setting of resolution, frame rate, video format



Different power line frequency 50Hz/60Hz can be selected.

Software settings and help

3.1 Save and load configuration files

You can save the relevant parameters in the local disk of your computer through the file saving function.



When you want to use the last camera effect next time, you can load the saved configuration file to directly call the effect without adjusting the parameters again.



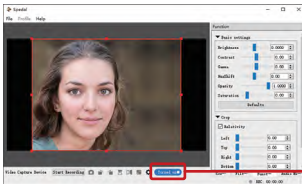
You can choose to save multiple different parameter configuration files corresponding to different usage scenarios.

If you do not want to use the saved configuration file again, you can delete it on the local disk.

3.2 Video adoption settings

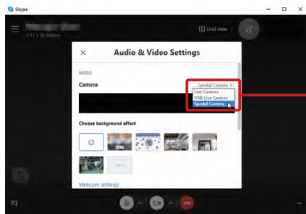
Spedal camera software supports third-party platforms. You can adopt Spedal video streams through video communication software such as ZOOM, Skype, Microsoft Teams, OBS...etc. The effects and parameters set in the Spedal camera software can be synchronized to the third-party platform. This function is also called the virtual camera function.

1. Open the Spedal software, set the parameters you need, and light up the Turned.on button under the menu bar at the bottom of the window;



Virtual camera on

2. Open the third-party video communication or conference software such as Skype, ZOOM, etc., select Spedal Camera under the camera setting module in the setting menu, and the video stream of the Spedal camera software will be collected in real time after selection.



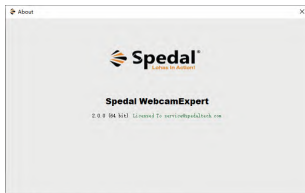
Skype as example
Select "Spedal Camera"
for camera

3. Third-party platforms can also adopt multiple video streams of Spedal software. With the help of Spedal software, you can realize the needs of multi-scene and multi-screen live broadcast or recording at the same time, saving you a lot of time for construction of devices and material editing afterwards.

3.3 Software update settings

Spedal software will release new versions from time to time. The new version upgrade mainly aims at the enhancement and improvement of existing functional modules, and fixes bugs and errors found in the use of the software.

The software will prompt you to upgrade when it is connected to the network. you need to restart the new version of the software after the software upgrade. You can view the version information in "Help"- "About".



3.4 Language setting and help

The software language defaults to English as the display language. If you need to change the software language to another language for use. You can switch the language through the path "File-Settings-General-Language", as shown in the figure below.

